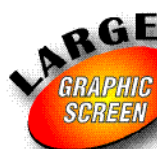




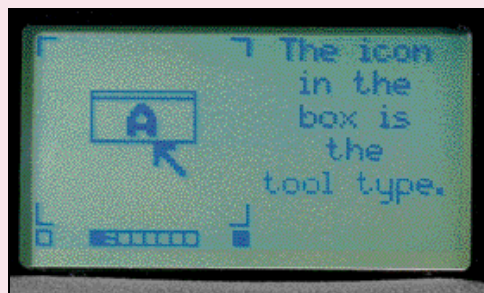
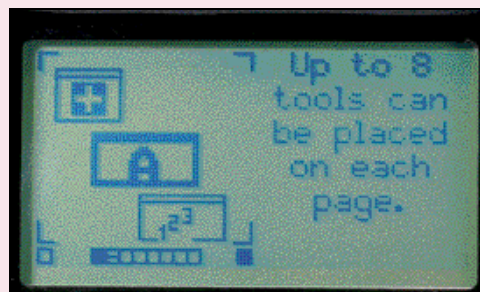
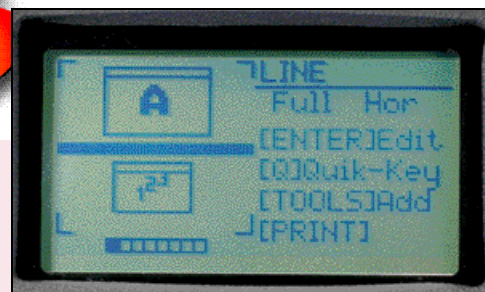
Features

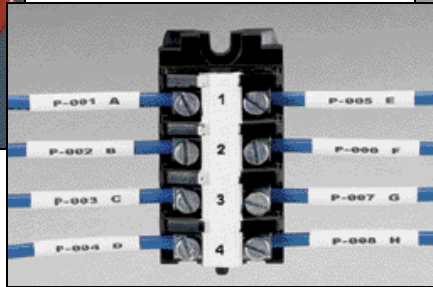
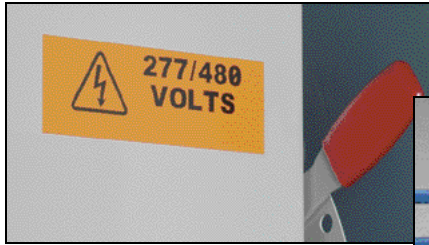
- Crisp 203 dpi thermal transfer print for professional looking labels with no smearing
- Automatically recognizes label size and adjusts printer settings to eliminate wasted setup time
- Tracks number of labels remaining on the roll and warns operator if there are not enough labels on the roll to finish a print job
- Nickel Metal Hydride battery provides longer battery life, is less susceptible to memory effect, and is more environmentally friendly
- AC Adapter included so you can start printing right out of the box
- Internal overnight battery charger built into printer
- Fast loading ribbon cartridge lets you slide, lock and go! — No difficult ribbon threading
- 128K file memory reduces setup time by recalling frequently used labels
- Large, ergonomic input keys are easy to find and manipulate
- Rugged mechanical cutter — no need for scissors
- Annunciator sounds after each key stroke to improve data entry speed and accuracy
- Bi-directional feeding automatically feeds label forward for cutting and automatically reverse feeds to eliminate wasted label stock
- Handy calculator function included
- PCMCIA Card factory upgradeable



Label Design Flexibility

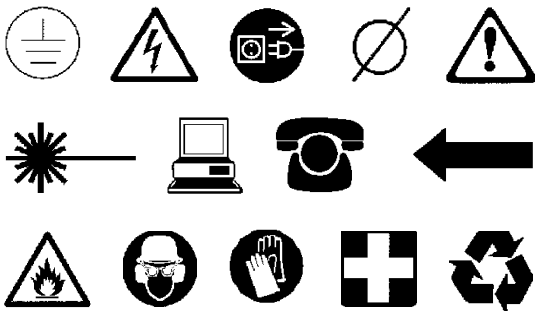
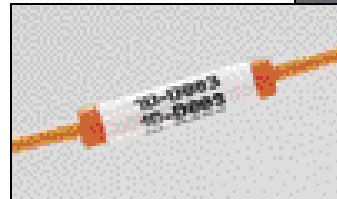
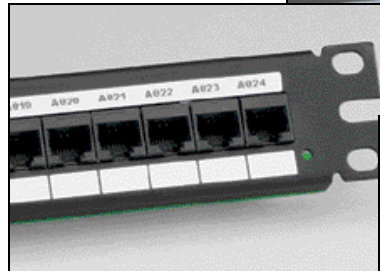
- 3.0" x 1.5" graphic screen display enables visual label design
- Print preview — eliminates guessing what your labels will look like
- Tools based firmware allows up to 8 different objects on a single label
- Choose from the following tools:
 - Text
 - Alpha and numeric serialization
 - Bar codes
 - Symbols
 - Date and time stamp
 - Line
 - Box
- Online help available on all screens





One Printer For All Your Labeling Needs

- Create wire markers, heat shrink labels, continuous tape, component labels, bin markers, pipe markers, safety/facility identification and network connectivity labels
 - Labels are available in a variety of materials in widths from 0.25" to 2.00"
 - Alpha and numeric serialization
 - Bar code printing
 - Date and time stamp
 - Print text from 6 pt to 192 pt tall
 - Large symbol library contains over 35 electrical, safety and network symbols
- Examples:



Computer Connectivity

- RS232 Port
- VIPERLINK™ Software
 - Upgrade the operating system
 - Download files
 - Upload files
 - Create legend lists